

Institute for Family Medicine

FY 2012 Annual Report

*Patient Care First.
Community Health Always.*



BOARD OF DIRECTORS

Rev. Richard Ellerbrake - *President*
Rodney Coe, Ph.D. - *Governance Chair*
Robert Smith, M.D. - *Finance Chair*
James Romeis, Ph.D. - *Programs Chair*
Nancy Sublette, RN, MHA - *Development Chair*
Janet Conners
Jim Houston, Jr.
J. Coleman Sheehan, CPA

OFFICERS

David Campbell, M.D., M.Ed. - *President & CEO*
Mary Cappel - *Vice President, Chief Business Officer*
Tracy Pestka, RN - *Chief Nursing Officer & Practice Manager*

4590 South Lindbergh Blvd.
Saint Louis, MO 63127
(314) 849-7669
<http://ifm-stl.org>
www.facebook.com/ifmstl
www.twitter.com/ifmstl



*Annual report edited by:
Megan Greathouse, Director of Communication & Development*

MISSION

The Institute for Family Medicine is dedicated to improving health and quality of life for disadvantaged children and families by reducing access barriers and delivering quality healthcare services.

VISION

IFM envisions a community in which:

- Every person has a health home.
- Quality health services are available and appropriately utilized.
- Disparities in health outcomes are reduced.
- Community agencies collaborate to improve health services.
- A sustainable cadre of health professionals is committed to achieving this vision.

TABLE OF CONTENTS

From the CEO	p. 2
Mission & Vision	p. 2
Program Partners	p. 3
People We Serve	p. 4
Our Supporters	p. 5
Our Staff	p. 5
Financial Report	p. 6
Locations	p. 6
Contact Information	p. 6

From the CEO



So here we are, at that “Annual Report” time of the year, when I put pen to paper (or at least fingers to keyboard) to reflect on the year past and look toward the year ahead. Our fiscal year runs from July 1 to June 30, so the end of the year never really seems like the “end of the year” – there is always more to be done in our mission to provide quality health care to disadvantaged children and families – but let’s reflect and project.

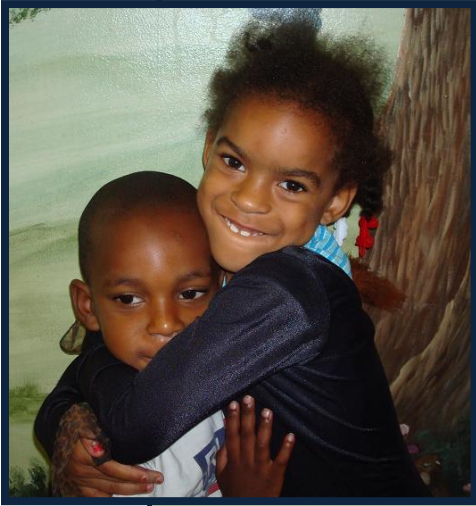
This year we have continued to adapt to our new reality – the post county health department era. While this has certainly presented some challenges, it has also opened up opportunities. Specifically, it has allowed us to clarify our mission.

In this report, you will read about the many populations we serve. What I think is most exciting about the Institute for Family Medicine is the way in which we serve those in need. This is what makes us truly unique:

- 1. We go where we are needed:** We take our services into the community, where they are needed most. We provide health care to those who have the least access to it, giving them much-needed care in convenient and trusted environments.
- 2. We fill gaps in health care:** We focus on seeking out the holes in health care and developing partnerships to fill needs that would otherwise go unmet.
- 3. Our small size makes us flexible, adaptable and responsive:** We work to meet the changing needs of the community by providing access to care as quickly and efficiently as possible.
- 4. We create effective partnerships:** Our strategic partnerships allow us to hold down the cost of care and deliver services in a culturally sensitive manner.
- 5. In a complex environment, we make health care simple:** We make it as easy as possible for our patients to access the best care available.
- 6. We put the “care” back in health care:** Our staff and patients are like family to us. We care about all of them. We put patient care first while continually striving to improve overall community health.

The Institute for Family Medicine provided more than 13,200 medical services to children, adults and senior citizens in FY 2012, and we are proud of this significant accomplishment. My sincere thanks to our incredible donors, sponsors, volunteers, staff and partner organizations for all you have done to bring quality health care to disadvantaged children and families.

We continue to seek out the health care gaps in our community and hope to increase and expand our services to meet these needs, but we can’t do it without your help. The Institute for Family Medicine appreciates your continued support, volunteer time and financial contributions as we work to provide care for the underprivileged and uninsured throughout the St. Louis community.



“The Institute for Family Medicine’s committed physicians and nurse practitioners expertly screen children at the Crisis Nurseries, many times finding a concern that otherwise would have progressed to a more serious illness. Providing child abuse prevention services and attention to a child’s health development is crucial to strengthening our community now and for the future – our partnership with IFM makes this possible.”

-- DiAnne L. Mueller, M.S., LPC
Chief Executive Officer, **Saint Louis Crisis Nursery**

Program Partners

At the Institute for Family Medicine, we believe that community partnership among schools, nonprofit organizations and caring professionals is the most effective way to reduce access barriers and make health care affordable and accessible for all. Our medical service programs represent creative, collaborative solutions to community needs.

“The Institute for Family Medicine is especially unique in delivering [medical] services in collaboration with community-based nonprofits that provide a wide range of social services to populations that often experience barriers at other community health providers.”

-- James A. Braun
President & CEO, **Youth In Need**

School Health Partnerships
Bayless School District
Clayton Schools
Hancock Place School District
Jennings School District
KIPP Inspire Academy
Maplewood Richmond Heights Schools
Special School District
St. Louis Public Schools
University City School District
University Missouri St. Louis Student Health
Social Service Organization Partnerships
Catholic Charities South Side
Covenant House
Every Child's Hope
International Institute
International Welcome School
Saint Louis Crisis Nursery
The Women's Safe House
Youth In Need
St. Louis City Housing Authority
University Partnerships for Education
St. Louis University School of Nursing

“Someone with no insurance and very little money can walk into one of our community-based clinics looking miserable, and leave smiling and hopeful. This is why I love my job!”

-- Heidi Worabo, DNP
IFM Nurse Practitioner
 3 years



People We Serve

Patients Cared for in FY 2012	
Children & Teens (0-17)	2,068
Adults (18-64)	2,356
Seniors (65+)	261
TOTAL PATIENTS	4,685

The Institute for Family Medicine’s caring doctors, nurse practitioners and nurses provide medical services for disadvantaged children, low-income families, the elderly and new Americans at more than a dozen locations throughout the greater St. Louis area. These patients need quality health care services, but struggle to navigate the traditional system due to lack of insurance, financial strain, difficulty accessing transportation, and language barriers. Many of our patients are also in transitional phases of their lives – homeless teens, women and children escaping domestic abuse, and refugees trying to find their way in a new country. We break down barriers to health care by taking our programs into the communities where children and families in need live, work, go to school and congregate.

Services Provided in FY 2012	
Saint Louis Crisis Nursery	894
Youth In Need	723
Every Child's Hope	210
Hancock Place school health clinic	411
Bayless School District	70
KIPP Inspire Academy	20
International Welcome School	1,034
International Institute	2,735
Vietnamese clinic	859
Covenant House	263
The Women’s Safe House	127
Parkview Complex senior living	143
Family practice at 4590 S. Lindbergh	5,766
TOTAL SERVICES	13,255



Our Supporters

Donations received in FY 2012

\$2,500 and up

Greater St. Louis Healthcare Foundation
United Healthcare

\$1,000 - \$2,499

Rodney & Elaine Coe
Richard & Johann Ellerbrake
Nancy Sublette

\$500 - \$999

Mario & Jane Conte
Simon Law Firm
Patti & Daryl Sohn

\$200 - \$499

Steve & Patty Berry
Joan & Mike Brennan
Shirley Brethauer
Kyra Cass
Carondelet United Church of Christ
Community Health Charities
John & Elizabeth Donnell
Joyce Reese
James & Dana Romeis
Barry & Darina Sargeant
Nic & Sue VanPatten

\$100 - \$199

Josh & Hannah Borgmeyer
Rich & Vicky Champlin
Brad & Jerri Emerson
Tom & Fran Emerson
Marion Gauer
Byron & Carolyn Golfin
Victoria Horst
Laura & Jon Maurice
Timothy & Cheryl O'Neill
John Papa & Pat Edwards
Ken & Lou Piotrowski
Reformation Lutheran Men's Club
James & GERALYN Ryan
Thomas Sehr & Margaret Wayne
William Siedhoff
St. Louis Gastroenterology

Joyce Thomas
Billie Vitale
John & Marva Warmington

Up to \$99

Samuel & Judith Dubelman
Shirley Hilbert
Alice & Michael Jockish
Ingrid Matthew
Robert Paine
Donnarae & Jerry Sheehan
Walter Knoll Florist
Jacqueline Welkener

***Thank you for your
generous support to
make St. Louis a
healthier community!***

New grants awarded in FY 2012

Funder	Purpose	Amount
Allen P. & Josephine B. Green Foundation	Clinic at St. Louis women's shelter	\$5,000
Nonprofit Services Center	Communications capacity building	\$18,300
St. Anthony's Charitable Foundation	Hancock Health Clinic	\$10,000
Mercy Health Foundation St. Louis	Vaccines for New Americans	\$28,200

Our Staff

ADMINISTRATION

Mary Cappel
Julie Ellison
Megan Greathouse
Laura McKinney
Tracy Pestka, RN
Michelle Schmitt

Vice President, Chief Business Officer
Medical Assistant / Receptionist
Director of Communication & Development
Medical Assistant
Chief Nursing Officer & Practice Manager
Administrative Assistant

PROVIDERS

David Campbell, M.D.
Sheerin Sturm, D.O.
Delora Brooks, FNP-BC
Brook Raye, FNP-BC
Heidi Worabo, DNP, FNP-BC

Primary care physician
Primary care physician
Nurse practitioner
Nurse practitioner
Nurse practitioner

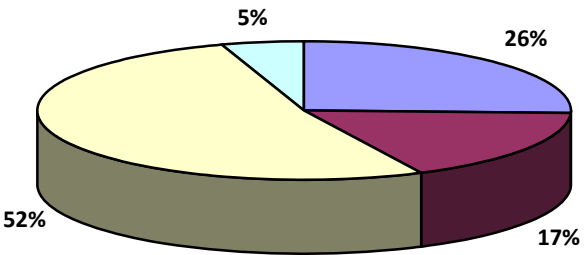
Looking for a medical home? The Institute for Family Medicine's family practice in Sunset Hills accepts most commercial insurances. Make an appointment and learn how your doctor visits can support IFM's community health work! **314-849-7669**

* Statement for fiscal year 2012 covers the period from July 1, 2011 – June 30, 2012.

Financial Report

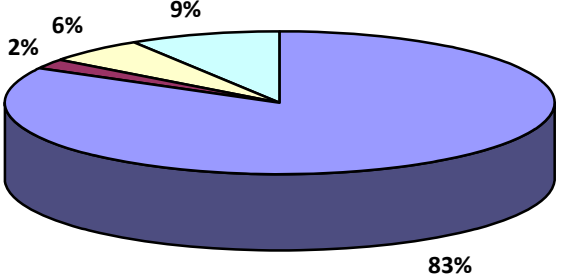
Total Income of FY2012	2,291,445.00
Expenses of Programs	1,770,330.00
Fundraising Expenses	22,960
Ending Net Assets	-519,796

FY 2012 INCOME



- Contracts
- Fundraising & Grants
- Patient Billing
- Other

FY 2012 EXPENSES

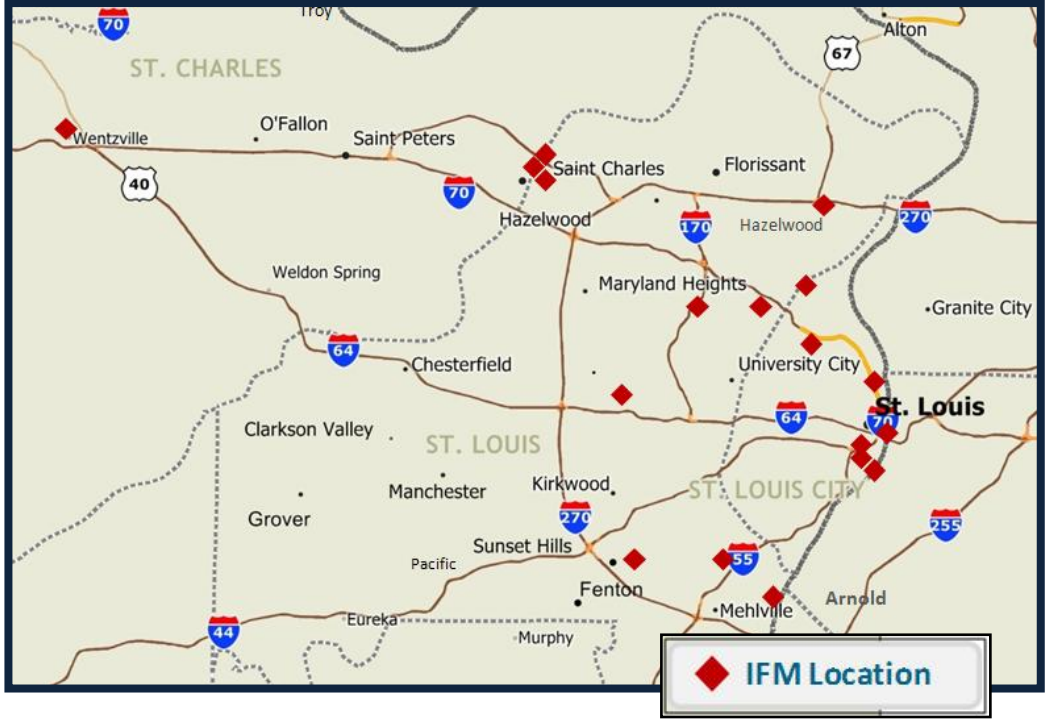


- Programs & Personnel
- Fundraising & Grants
- Occupancy
- Other

Questions? Please contact:

Megan Greathouse
 Director of Communication & Development
megan.greathouse@ifm-stl.org
 314-849-7669 ext. 104

Contact Information



MAIN OFFICE

4590 South Lindbergh Blvd.
 Saint Louis, MO 63127
 (314) 849-7669
<http://ifm-stl.org>
www.facebook.com/ifmstl
www.twitter.com/ifmstl

